

**PROPERTY DESCRIPTION**

0.819 acre site with frontage along SW Wilshire Blvd.

LOCATION: 271 SW Wilshire Boulevard

SIZE: 0.819 Acres

UTILITIES: Utilities Available to site

ACCESS: Curb cut onto SW Wilshire Blvd

TRAFFIC  
COUNTS: 31,059 AADT

POPULATION: 41,818 (City Population)



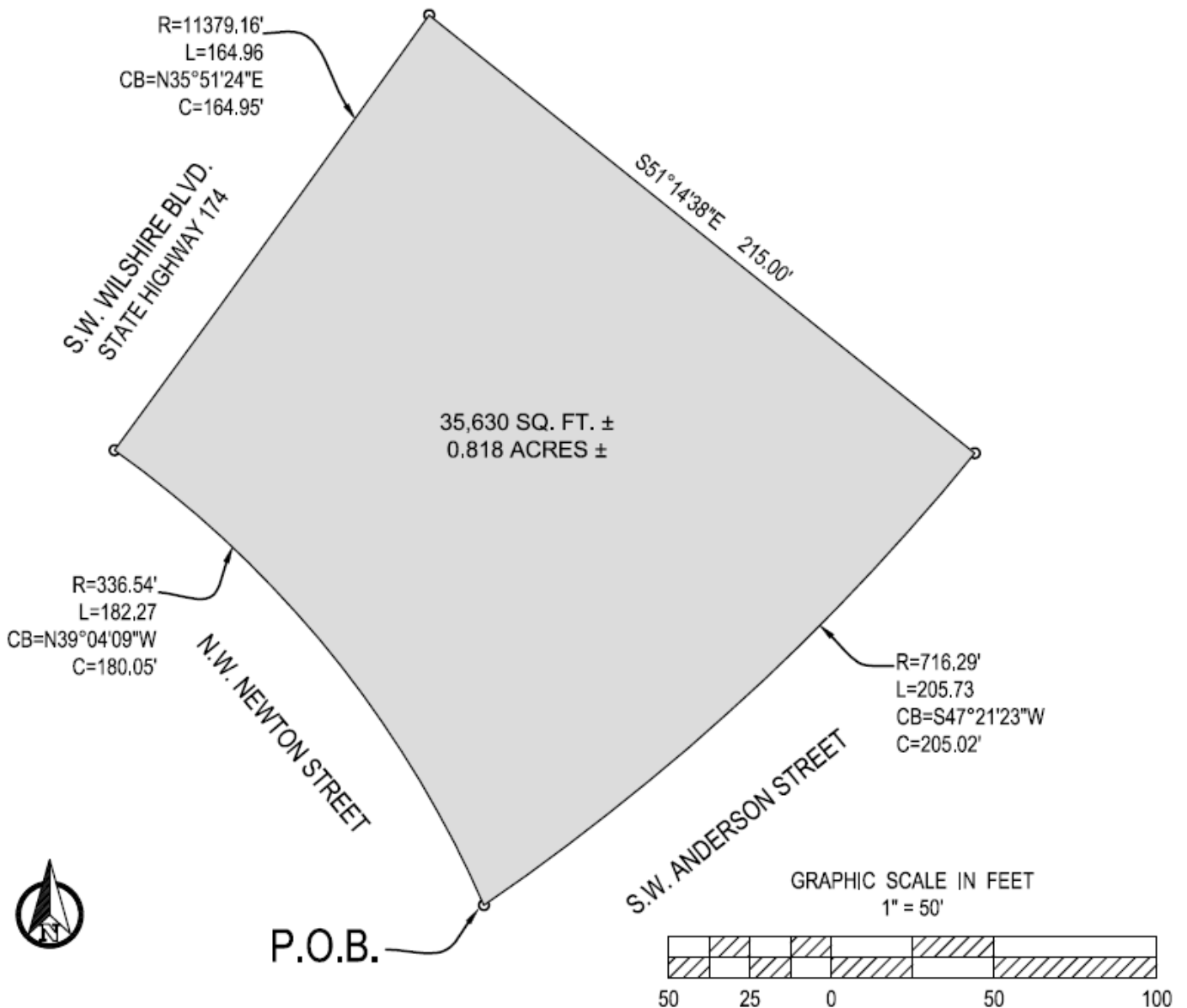
200 Galleria Parkway,  
Atlanta GA 30339  
(800) 388-8035 x1112

[racetracrealestate@racetrac.com](mailto:racetracrealestate@racetrac.com)  
[racetracrealestate.com](http://racetracrealestate.com)

# EXHIBIT "A"

All that tract of land situated in the City of Burleson, County of Johnson, Texas, and being more particularly described as follows:

Begin at the intersection of the northwest Right-of-Way line of S.W. Anderson Street and the northeast Right-of-Way line of N.W. Newton Street, said point being a point of curvature for curve concave southwesterly, having a radius of 336.54 feet, a chord bearing and distance of North 39 Degrees 04 Minutes 09 Seconds West, 180.05 feet; thence proceed along the northeast Right-of-Way line of N.W. Newton Street in a northwesterly direction following the curvature thereof for an arc distance of 182.27 feet to a point of curvature located at the intersection of the northeast Right-of-Way line of N.W. Newton Street and the southeast Right-of-Way line of S.W. Wilshire Boulevard (State Highway 174); said curve having a radius of 11379.16 feet, a chord bearing and distance of North 35 Degrees 51 Minutes 24 Seconds East, 164.95 feet; thence proceed along the southeast Right-of-Way line of S.W. Wilshire Boulevard following the curvature thereof for an arc distance of 164.96 feet to a point; thence leaving southeast Right-of-Way line of S.W. Wilshire Boulevard South 51 Degrees 14 Minutes 38 Seconds East for a distance of 215.00 feet to a point of curvature located on the northwest Right-of-Way line of S.W. Anderson Street; said curve having a radius of 716.29 feet, a chord bearing and distance of South 47 Degrees 21 Minutes 23 Seconds West, 205.02 feet; thence proceed along the northwest Right-of-Way line of S.W. Anderson Street following the curvature thereof for an arc distance of 205.73 feet to the Point of Beginning containing 35,630 square feet or 0.818 acres, more or less.



THE INFORMATION SET FORTH IS BELIEVED TO BE ACCURATE, BUT MAY CONTAIN ERRORS AND OMISSIONS. RACETRAC PETROLEUM, INC. DISCLAIMS ALL REPRESENTATIONS AND WARRANTIES WITH RESPECT THERETO.