



PROPERTY DESCRIPTION

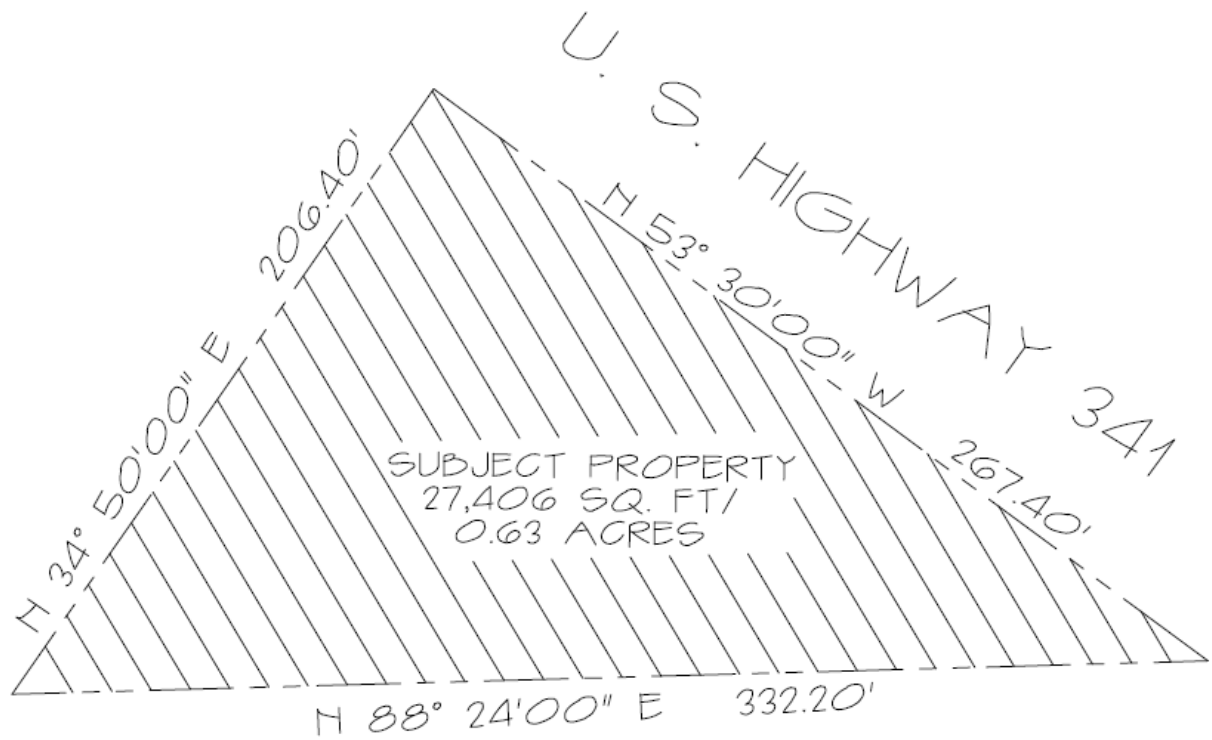
0.63 acre site with 265+ feet of frontage along Sam Nunn Boulevard (Highway 341), located approximately ¼ mile from Interstate 75.

- LOCATION: Sam Nunn Boulevard (Highway 341), ¼ mile west of I-75
- SIZE: 0.63 Acres
- ZONING: "C-1", Highway Commercial (City of Perry)
- UTILITIES: Utilities available to site
- TRAFFIC COUNTS: 5,200 AADT on Sam Nunn Boulevard ('09)
- ACCESS: Existing Curb cuts onto DOT ROW
- POPULATION: One Mile: 1,394
Three Miles: 11,339
Five Miles: 17,717



**3225 Cumberland Blvd
Suite 100
Atlanta, GA 30339**

**(800) 388-8035 x1112
racetracrealestate@racetrac.com
racetracrealestate.com**



THE INFORMATION SET FORTH IS BELIEVED TO BE ACCURATE, BUT MAY CONTAIN ERRORS AND OMISSIONS. RACETRAC PETROLEUM, INC. DISCLAIMS ALL REPRESENTATIONS AND WARRANTIES WITH RESPECT THERTO.