

LOCATION: W Northwest Highway, between I-35E & Harry Hines Blvd.

SIZE: 1.645 Acres

ZONING: MU-3, Mixed Use (City of Dallas)

UTILITIES: Utilities available to site

TRAFFIC COUNTS: 457,597 AADT on W Northwest Highway ('16)

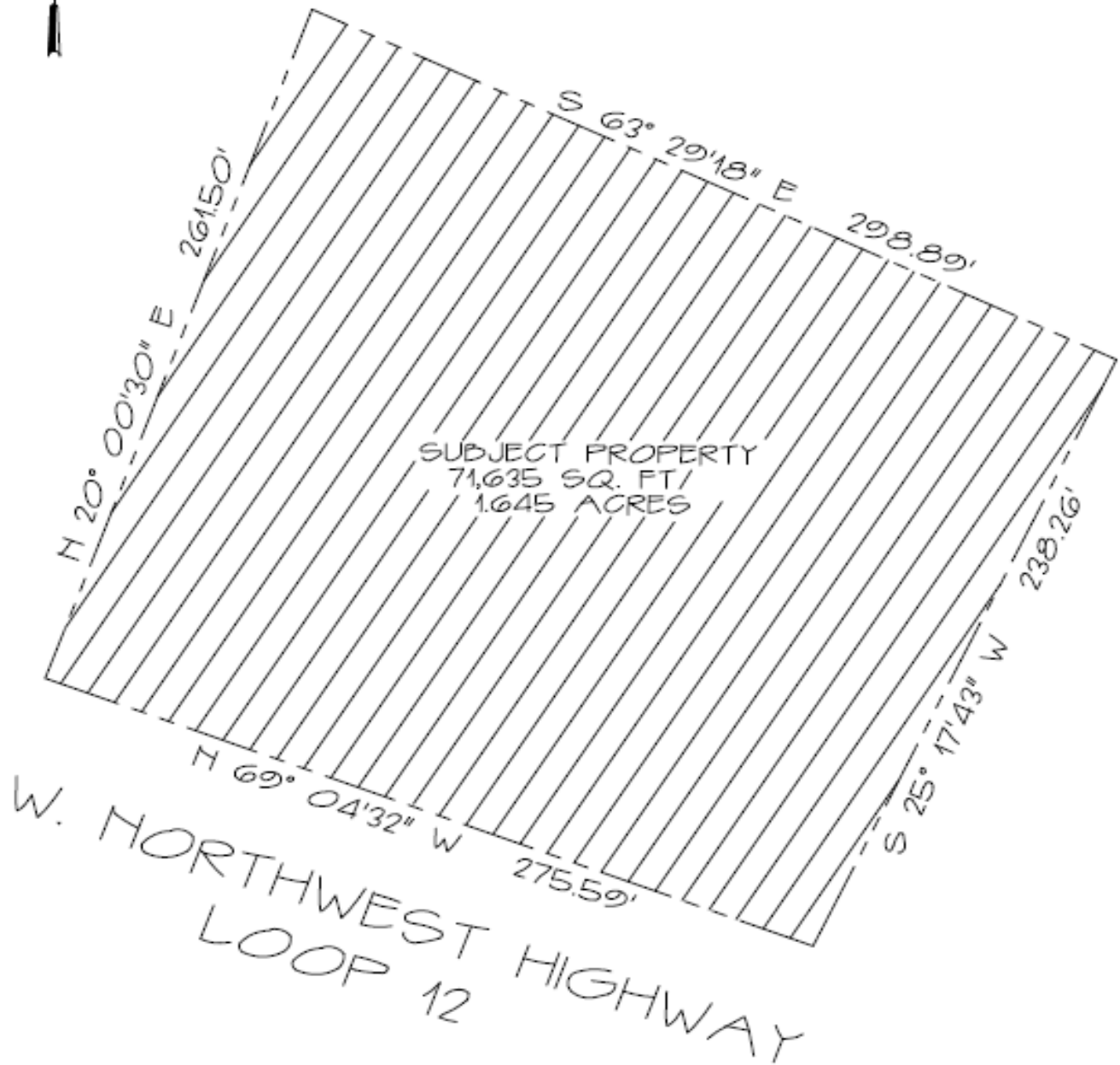
ACCESS: Curb cut onto Northwest Highway

POPULATION: One mile: 14,109
Three miles: 80,831
Five miles: 229,976



200 Galleria Parkway,
Atlanta GA 30339
(800) 388-8035 x1112

racetracrealestate@racetrac.com
racetracrealestate.com



200 Galleria Parkway,
Atlanta GA 30339
(800) 388-8035 x1112

racetracrealestate@racetrac.com
racetracrealestate.com