

LOCATION: SEC of Cortez Boulevard & Deltona Boulevard, east of US 19

SIZE: 8.45 acres

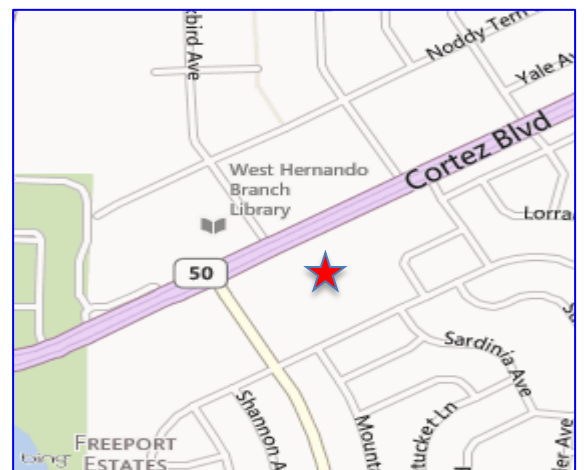
ZONING: PDP (GHC), General Highway Commercial (Hernando County)

UTILITIES: Utilities available to site

TRAFFIC COUNTS: 26,000 AADT on Cortez Blvd('09)

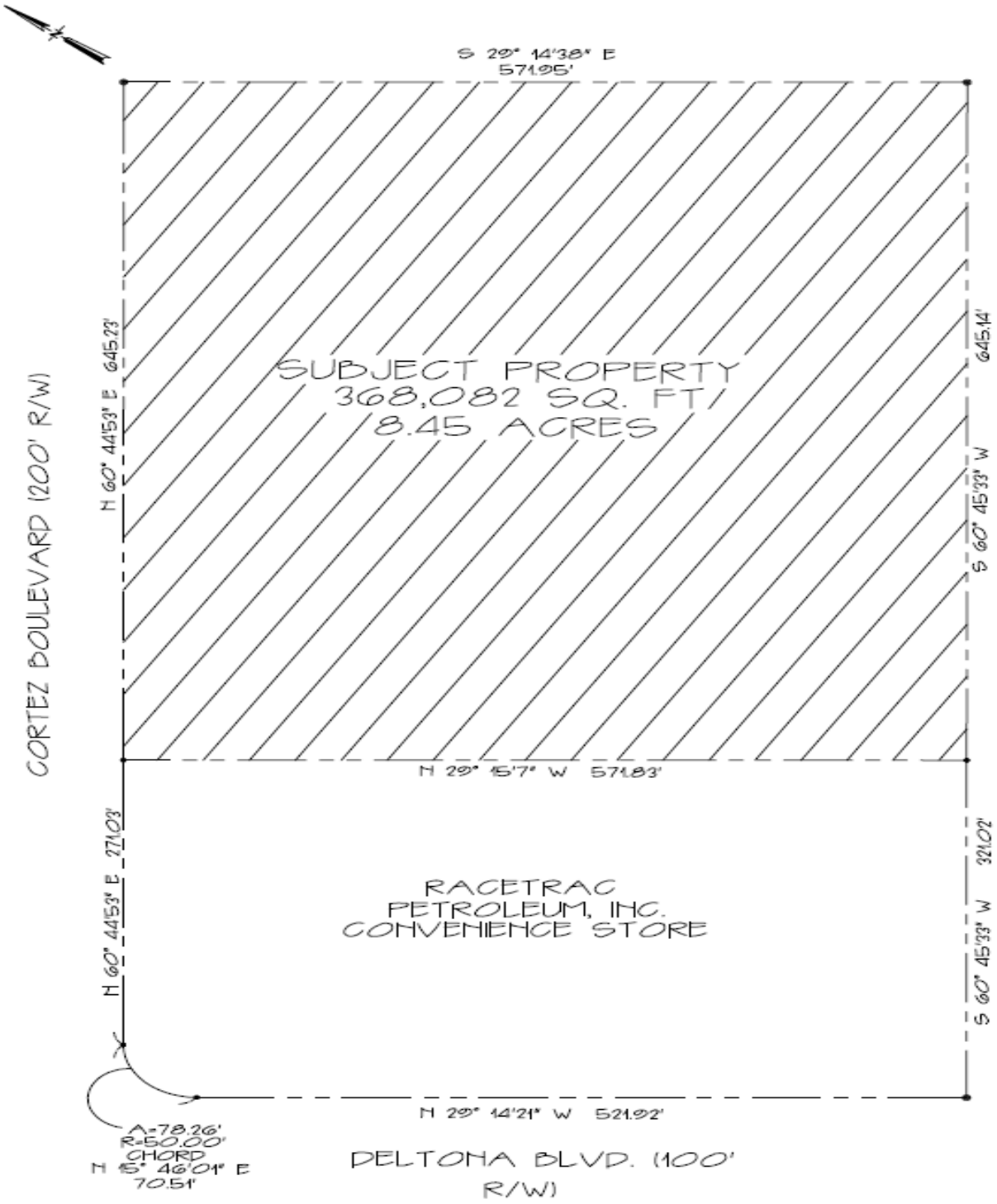
ACCESS: Shared access with RaceTrac

POPULATION: One mile: 2,871
Three miles: 36,416
Five miles: 90,160



**3225 Cumberland Blvd
Suite 100
Atlanta, GA 30339**

**(800) 388-8035 x1112
racetracrealstate@racetrac.com
racetracrealstate.com**



REAL ESTATE

3225 Cumberland Blvd
 Suite 100
 Atlanta, GA 30339

(800) 388-8035 x1112
racetracrealestate@racetrac.com
racetracrealestate.com