

PROPERTY DESCRIPTION

0.43 acres with frontage along East Oak Street

LOCATION: 101 E. Oak St.

SIZE: 0.43 Acres

ZONING: C-3

UTILITIES: Utilities Available to site

ACCESS: Curb cut onto E. Oak St.

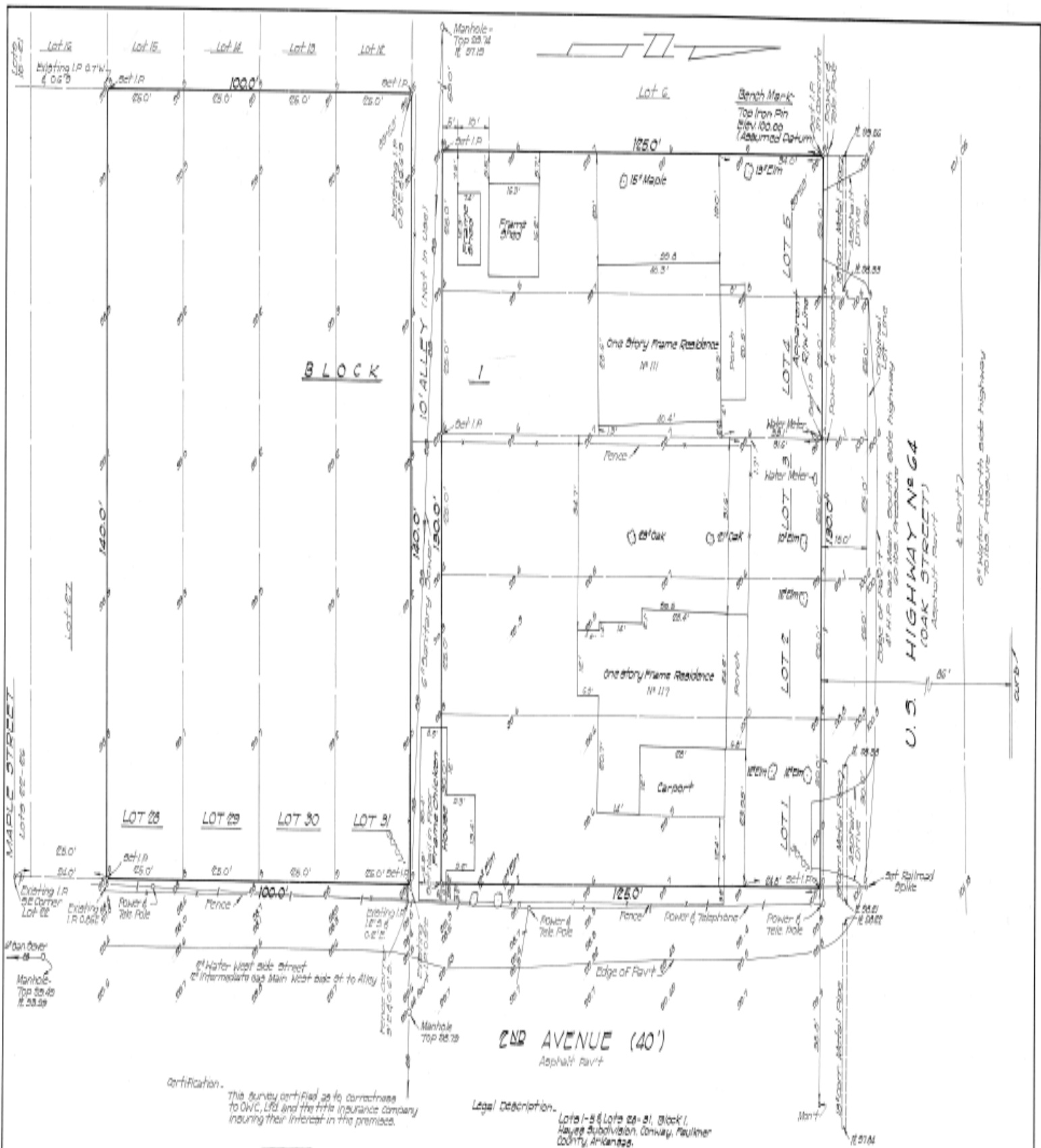
TRAFFIC COUNTS: 29,000 AADT ('14)

POPULATION: 64,490 City Population ('14)



200 Galleria Parkway,
Atlanta GA 30339
(800) 388-8035 x1112

racetracrealestate@racetrac.com
racetracrealestate.com



Certification.
 This survey certified as to correctness
 to O.W.C. Ltd and the title insurance company
 insuring their interest in the premises.

Legal Description.
 Lots 1-5 & Lots 28-31, Block 1,
 Hayes Subdivision, Conway, Faulkner
 County, Arkansas.



EDWARD G. SMITH & ASSOCIATES
 SURVEYORS REGISTERED
 No. 9000
 Little Rock, Arkansas 72201

| | | |
|---|--|-----------------|
| Boundary & Topographic Survey | | Serial |
| LOTS 1-5 & LOTS 28-31 BLOCK 1, HAYES SUBDIVISION | | Date 10/23/79 |
| CONWAY, FAULKNER CO., ARK. | | Scale 1" = 100' |
| For: O.W.C. Ltd | | Sheet 1 of 1 |