

PROPERTY DESCRIPTION

3.86 acre site with approximately 335 feet of frontage along W University Avenue, just east of I-55..

- LOCATION: W University Avenue, east of I-55
- SIZE: 3.86 Acres
- ZONING: No Zoning in Tangipahoa Parish
- UTILITIES: Utilities Available to site
- ACCESS: Curb cut onto W University Avenue
- TRAFFIC COUNTS: 22,207 AADT ('10)
- POPULATION: One Mile 1,973
Three Miles 27,840
Five Miles 50,723

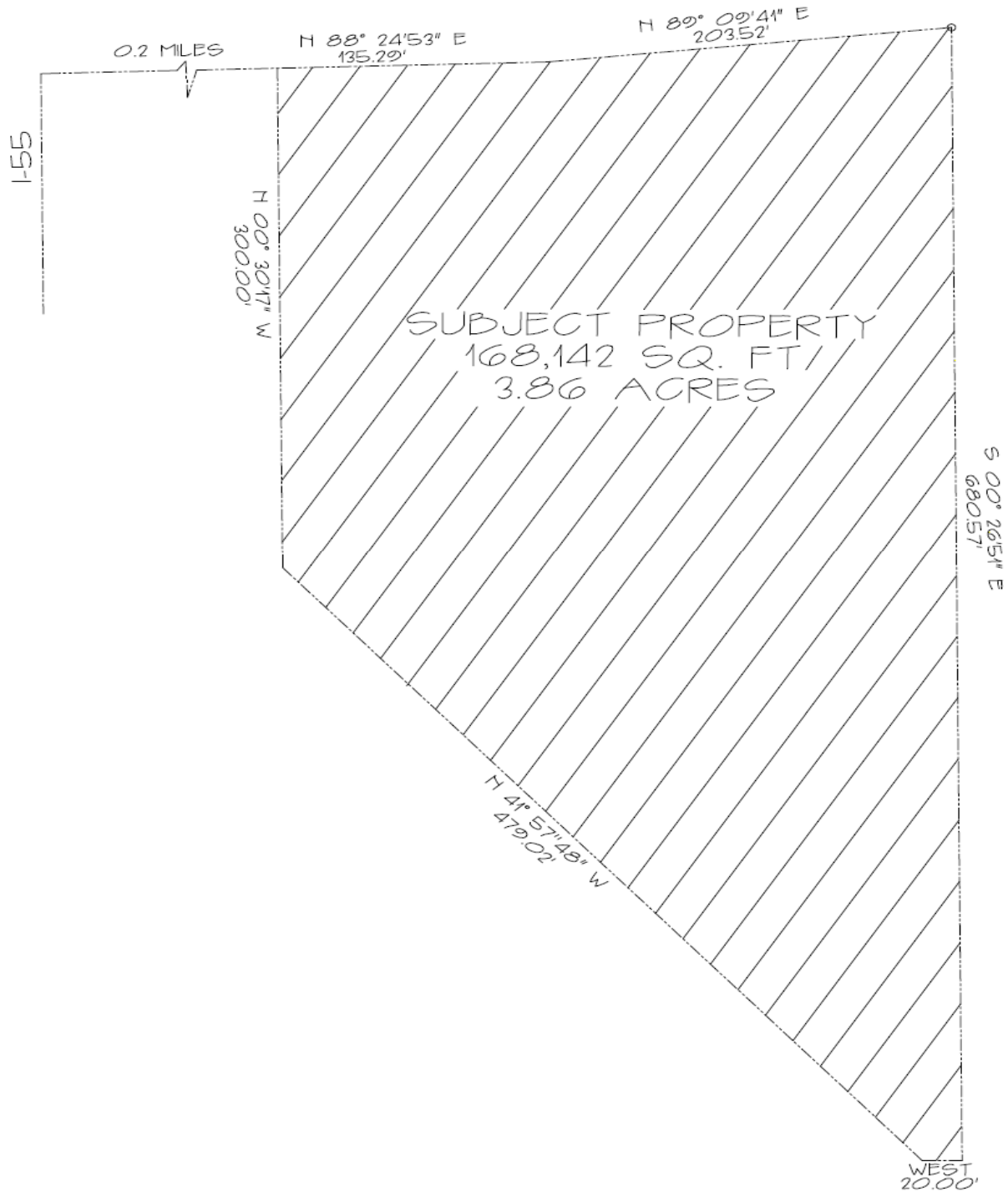


200 Galleria Parkway,
Atlanta GA 30339
(800) 388-8035 x1112

racetracrealestate@racetrac.com
racetracrealestate.com



UNIVERSITY AVENUE



THE INFORMATION SET FORTH IS BELIEVED TO BE ACCURATE, BUT MAY CONTAIN ERRORS AND OMISSIONS. RACETRAC PETROLEUM, INC. DISCLAIMS ALL REPRESENTATIONS AND WARRANTIES WITH RESPECT THERTO.